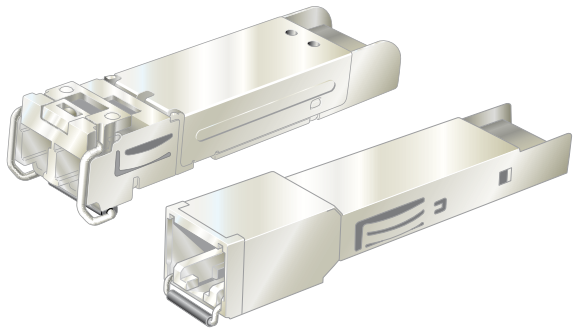


User Guide
6100-0000



SFP Transceivers



ESD Protection



www.westermo.com

SFP Transceivers

Supported transceivers

The following transceivers are supported by the RedFox Industrial with SFP ports.

Note, the unit supports Westermo labelled transceivers only.

100 Mbit

Westermo article number	Description	Needs optical attenuator*	UL Recognized
1100-0131	FX-MM-LC2	NO	YES
1100-0132	FX-SM-LC20	NO	YES
1100-0133	FX-SM-LC40	YES	NO
1100-0134	FX-SM-LC80	YES	NO

1000 Mbit

Westermo article number	Description	Needs optical attenuator*	UL Recognized
1100-0144	SX-MM-LC0.55	NO	YES
1100-0147	SX+-MM-LC2	NO	YES
1100-0141	LX-SM-LC10	NO	YES
1100-0142	XD-SM-LC50	YES	YES
1100-0148	1000Base-T copper	NO	NO

* Warning, to avoid damage on the receiver always use an optical attenuator if a loop back test is made with patch cables.

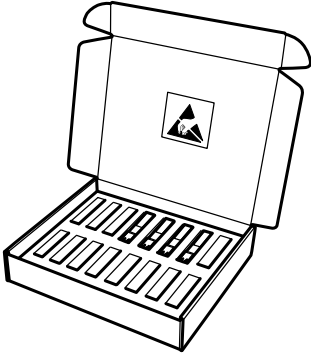
Other transceivers will be available, please contact Westermo for more information.

Assemble the Transceiver/s

This instructions show the correct way to assemble the fibre optic transceivers due to the risk of damage that ESD (Electrostatic Discharge) may cause the transceiver and / or the product.

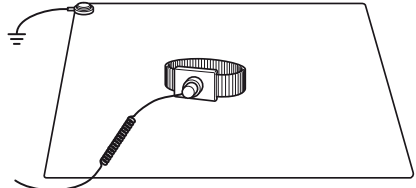
Fibre Optic Transceivers

The transceivers are delivered in an ESD protected box.



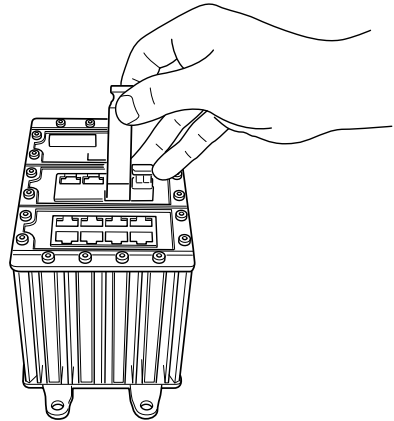
Working Area

Use an antistatic surface which is connected to ground and make sure the wrist straps is properly worn and connected.



Assemble the Transceivers

Place the switch on the protected working area with the front facing towards you. Select the right transceiver to assembly, note that it is possible to mix transceivers with different distances in one RedFox unit (see the list of transceivers below). Fit the transceiver in to the SFP case and press it carefully until the transceiver clicks in to its position. On the transceivers there is handle in order to remove the transceiver, if the transceiver shall be removed lift the handle towards you. After assembly put the handle in the original position.



Note. Fibre Optic Handling

Fibre optic equipment requires careful handling as the fibre components are very sensitive to dust and dirt. If the fibre is disconnected from the modem, the protective plug on the transmitter/receiver must be replaced. The protective plug must be kept on during transportation. The fibre optic cable must also be protected in the same way. If this recommendation is not followed, it can jeopardise the warranty.



Westermo Teleindustri AB • SE-640 40 Stora Sundby, Sweden
Phone +46 16 42 80 00 Fax +46 16 42 80 01
E-mail: info@westermo.se
Westermo Web site: www.westermo.com

Subsidiaries

Westermo Data Communications AB
Svalgängen 1
SE-724 81 Västerås
Phone: +46 (0)21 548 08 00 • Fax: +46 (0)21 35 18 50
info.sverige@westermo.se

Westermo Data Communications Ltd
Talisman Business Centre • Duncan Road
Park Gate, Southampton • SO31 7GA
Phone: +44(0)1489 580-585 • Fax: +44(0)1489 580586
E-Mail: sales@westermo.co.uk

Westermo Data Communications GmbH
Goethestraße 67, 68753 Waghäusel
Tel.: +49(0)7254-95400-0 • Fax: +49(0)7254-95400-9
E-Mail: info@westermo.de

Westermo Data Communications S.A.R.L.
9 Chemin de Chilly 91160 CHAMPLAN
Tél : +33 1 69 10 21 00 • Fax : +33 1 69 10 21 01
E-mail : infos@westermo.fr

Westermo Data Communications Pte Ltd
2 Soon Wing Road #08-05
Soon Wing Industrial Building
Singapore 347893
Phone +65 6743 9801 • Fax +65 6745 0670
E-Mail: sales@westermo.com.sg

Westermo Teleindustri AB have distributors in several countries, contact us for further information.