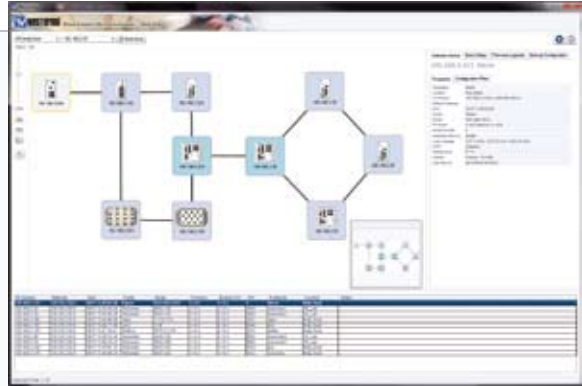


WeConfig

Network Configuration Management Tool

- ⌘ Rapid configuration of new network components saving time
 - Network Scan to discover devices
 - Simplified and rapid network address allocation
 - Easy access to web based or CLI configuration interfaces
 - Simple download of configuration file
- ⌘ Easy maintenance of network components
 - Simple backup and storage of configuration files
 - Easy restoration of configuration file onto replacement unit
 - Controlled firmware version upgrade method
- ⌘ Network configuration information readily available
 - Automatically learned network topology
 - Configurable network topology map
 - Device property screen



WeConfig is a Network Configuration Management (NCM) Tool. This tool has been developed to provide a simple method of network configuration of single or multiple Westermo devices. Once installed on a PC the software scans the network for devices. Once the scan is complete a list of devices as well as a mini topology map is displayed. Now basic configuration information like IP addresses can be quickly assigned and further configuration easily facilitated by accessing device web or CLI configuration windows.

Once devices are configured and the network commissioned a backup of all the device configuration files can be easily made and stored. In the event that a switch or router needs to be replaced in service a rapid download of the saved configuration file results in a fast network repair. If a firmware upgrade is available for the network devices then a system-wide upgrade can be managed by WeConfig.

Once operational the network topology can be viewed in WeConfig and edited to more clearly show the interconnection of resilient network structures. Device properties can be easily read and additional equipment added rapidly and professionally.

Weconfig is a tool that simplifies both the initial installation of a network and the ongoing maintenance once commissioned.